

2.4 Differentiability and Continuity

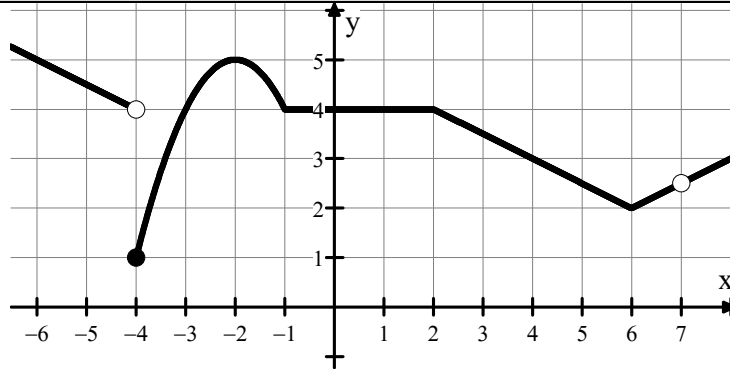
Calculus

Name: _____

CA #1

Identify any x -values of the function that are not continuous and/or not differentiable.

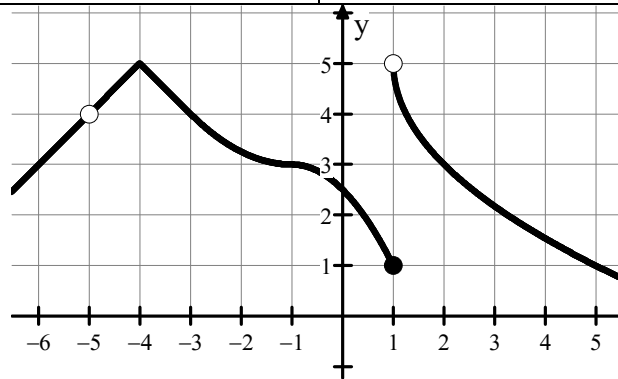
1.



x -values where the function is not continuous.

x -values where the function is continuous, but not differentiable.

2.



x -values where the function is not continuous.

x -values where the function is continuous, but not differentiable.

1. Not continuous: $x = -4, x = 7$	Continuous, but not differentiable: $x = -1, x = 2, x = 6$
2. Not continuous: $x = -5, x = 1$	Continuous, but not differentiable: $x = -4$

Answers to 2.4 CA #1